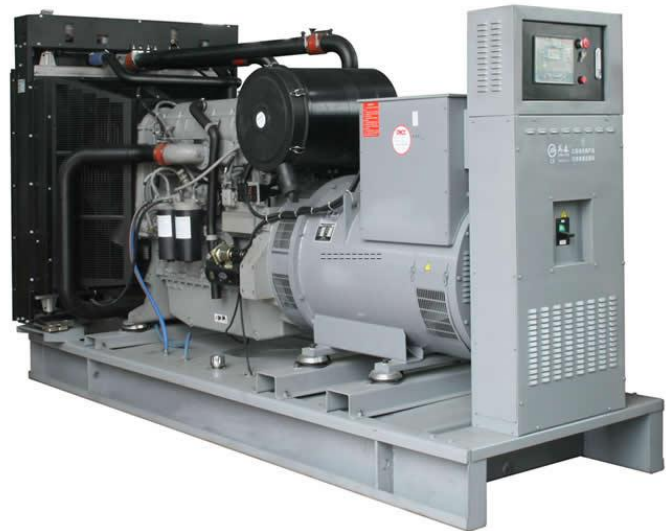


MODEL	HQP160GF	
Prime Power(50Hz)	160KW	200KVA
Standby Power(50Hz)	176KW	220KVA

### Standard Features

#### General Features:

- ◆ Engine (Perkins 1306C-E87TAG3)
- ◆ Radiator 50°C max, fans are driven by belt, with safety guard
- ◆ 24V charge alternator
- ◆ Alternator: single bearing alternator IP23, insulation class H/H
- ◆ Absorber
- ◆ Dry type air filter, fuel filter, oil filter
- ◆ Main line circuit breaker
- ◆ Standard control panel
- ◆ Batteries, rack and cable
- ◆ Ripple flex exhaust pipe, exhaust siphon, flange, muffler
- ◆ User manual



### Generator Ratings

Voltage(V)		Hz	Phase	P.F ( $\cos \phi$ )	Prime Amps (A)	Prime Ratings (KW/KVA)	
440	254	50	3	0.8	262.44	160	200
415	240	50	3	0.8	278.25	160	200
400	230	50	3	0.8	288.68	160	200
380	220	50	3	0.8	303.88	160	200

● Prime Power (PRP): Prime power is available for an unlimited number of annual hours in variable load application, in accordance with GB/T2820-97 (eqv ISO8528) ; A 10% overload capability is available for a period of 1 hour within a 12-hour period of operation.

● Standby Power Rating (ESP): The standby power rating is applicable for supplying emergency power for the duration of a utility power interruption. No overload, utility parallel or negotiated outage operation capability is available at this rating.

### Standard Features

Huaquan Power provides a full line of brand new and high quality products. Each and every unit is strictly factory tested. Warranty is according to our standard conditions: ① 12 months, counted on the day Huaquan sold to the first buyer; ② One year after installation; ③ 1000 running hours (accumulated); subject to the earlier one. Service and parts are available from Huaquan Power or distributors in your location.

**Engine Data**

Manufacturer / Model: Perkins 1306C-E87TAG3, 4-cycle

Air Intake System: Turbocharged

Fuel System: Direct Injection

Cylinder Arrangement: 6 in line

Displacement: 8.7L

Bore and Stroke: 116.6\*135.9 (mm)

Compression Ratio: 16.9:1

Rated RPM: 1500rpm

Max. Standby Power: 205KW

Governor Type: Electronic

**Fuel System**

100%( Prime Power) Load: 36.8 L/h

**Oil System**

Total Oil Capacity: 26.4L

**Alternator Specification**

Compliance with GB755, BS5000, VDE0530, NEMAMG1-22, IED34-1, CSA22.2 and AS1359 standards.

**Alternator Data**

Manufacturer: STAMFORD/MARATHON/ LEROY-SOMER/HUAQUAN

Number of Phase: 3

Connecting Type: 3 phase and 4 wires ,"Y" type connecting

Number of bearing: 1

Power factor: 0.8

Protection grade: IP23 option, upon request

Altitude :  $\leq 1000\text{m}$

Exciter type: Brushless,self-exciting

Insulation class: H

Telephone influence factor(TIF):  $\leq 50$

THF:  $\leq 2\%$

Alternator Capacity: 200 KVA

Alternator Efficiencies: 85%

Air Cooling Flow: 0.09m<sup>3</sup>/s

**Generating Set Data**

- Voltage Regulation:  $\geq \pm 5\%$
- Voltage Regulation, Stead State:  $\leq \pm 1\%$
- Sudden Voltage Warp:  $\leq +25\%$
- Sudden Voltage Warp:  $\leq -20\%$
- Voltage Stable Time:  $\leq 6S$
- Voltage unbalance:  $\leq 1\%$
- Frequency Regulation, Stead State:  $\leq 5\%$
- Frequency Waving:  $\leq 1.5\%$
- Sudden Frequency Warp:  $\leq +12\%$
- Transient frequency deviation:  $\leq -10\%$
- Frequency Recovery Time:  $\leq 5S$

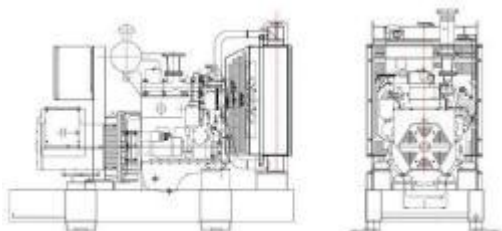
**Standard Features**

- ◆ Standard Auto Control System
- ◆ Starting batteries
- ◆ Exhaust System
- ◆ MCCB
- ◆ Battery switch
- ◆ Shock pad
- ◆ Special tool
- ◆ Oil Drain Valve
- ◆ Documents

**Options**

- Engine:  Engine Heater
- Alternator:  Alternator Heater
- Electrical System:  Remote Control Panel
- Type:  Rainproof Type
- Other:  Spare Parts
- Battery Charger
- PMG
- Automatic Transfer Switch
- Soundproof Type
- Daily Fuel Tank
- Air preheater
- Paralleling System
- Trailer Type

**Dimension & Weight**



**Open Type**

Overall Size: 3035(mm) × 900 (mm) × 1525 (mm)  
 Weight: 1695 kg

**Soundproof Type**

Overall Size: 3300 (mm) × 1400 (mm) × 1950 (mm)  
 Weight: 2650 kg

**Standard Control Panel**



Huaquan Power uses micro processing technique integrating digital, intelligent and network techniques which can carry out functions including auto start/stop, data measure, alarming. The controller uses Smartgen LCD display, optional Chinese and English/ Russian/ Spanish display interface with operation easy and reliable. It can be widely used in all types of generator automatic control system for compact structure, advanced circuits, simple connections and high reliability.