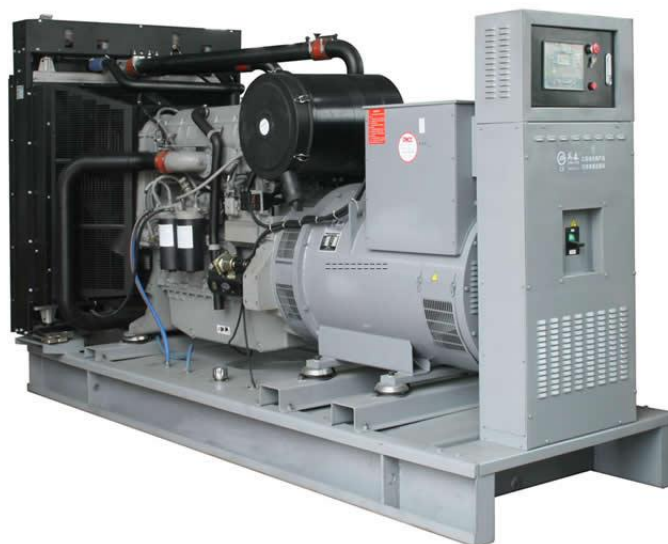


MODEL	HQP280GF	
Prime Power(50Hz)	280KW	350KVA
Standby Power(50Hz)	308KW	385KVA

Standard Features

General Features:

- ◆ Engine (Perkins 2206A-E13TAG2)
- ◆ Radiator 50°C max, fans are driven by belt, with safety guard
- ◆ 24V charge alternator
- ◆ Alternator: single bearing alternator
IP23, insulation class H/H
- ◆ Absorber
- ◆ Dry type air filter, fuel filter, oil filter
- ◆ Main line circuit breaker
- ◆ Standard control panel
- ◆ Batteries, rack and cable
- ◆ Ripple flex exhaust pipe, exhaust siphon, flange, muffler
- ◆ User manual



Generator Ratings

Voltage(V)		Hz	Phase	P.F ($\cos \phi$)	Prime Amps (A)	Prime Ratings (KW/KVA)	
440	254	50	3	0.8	459.27	280	350
415	240	50	3	0.8	486.94	280	350
400	230	50	3	0.8	505.20	280	350
380	220	50	3	0.8	531.79	280	350

●Prime Power (PRP): Prime power is available for an unlimited number of annual hours in variable load application, in accordance with GB/T2820-97 (eqv ISO8528) ; A 10% overload capability is available for a period of 1 hour within a 12-hour period of operation.

●Standby Power Rating (ESP): The standby power rating is applicable for supplying emergency power for the duration of a utility power interruption. No overload, utility parallel or negotiated outage operation capability is available at this rating.

Standard Features

Huaquan Power provides a full line of brand new and high quality products. Each and every unit is strictly factory tested. Warranty is according to our standard conditions: ①12 months, counted on the day Huaquan sold to the first buyer; ② One year after installation; ③ 1000 running hours (accumulated); subject to the earlier one. Service and parts are available from Huaquan Power or distributors in your location.

Engine Data

Manufacturer / Model: Perkins 2206A-E13TAG2, 4-cycle

Air Intake System: Turbocharged

Fuel System: Direct Injection

Cylinder Arrangement: 6 in line

Displacement: 12.5L

Bore and Stroke: 130*157 (mm)

Compression Ratio: 16.3:1

Rated RPM: 1500rpm

Max. Standby Power: 368KW

Governor Type: Electronic

Exhaust system

Exhaust Gas Flow: 64.8m³/min

Exhaust Temperature: 630°C

Max Back Pressure: 10 kPa

Air Intake System

Consumption: 23.6 m³/min

Fuel System

100%(Prime Power) Load: 71 L/h

Oil System

Total Oil Capacity:40L

Oil Pressure at Rated RPM: 270 kPa

Cooling System

Total Coolant Capacity:51.4L

Thermostat: 87-98°C

Max Water Temperature: 104°C

Alternator Specification

Compliance with GB755, BS5000, VDE0530, NEMAMG1-22, IED34-1, CSA22.2 and AS1359 standards.

Alternator Data



Perkins Genset

HQP280GF

Manufacturer: STAMFORD/MARATHON/ LEROY-SOMER/HUAQUAN

Number of Phase: 3

Connecting Type: 3 phase and 4 wires , "Y" type connecting

Number of bearing: 1

Power factor: 0.8

Protection grade: IP23 option, upon request

Altitude : $\leq 1000\text{m}$

Exciter type: Brushless, self-exciting

Insulation class: H

Telephone influence factor(TIF): ≤ 50

THF: $\leq 2\%$

Alternator Capacity: 350 KVA

Alternator Efficiencies: 85%

Air Cooling Flow: 0.09m³/s

Generating Set Data

Voltage Regulation: $\geq \pm 5\%$

Voltage Regulation, Stead State: $\leq \pm 1\%$

Sudden Voltage Warp: $\leq +25\%$

Sudden Voltage Warp: $\leq -20\%$

Voltage Stable Time: $\leq 6\text{S}$

Voltage unbalance: $\leq 1\%$

Frequency Regulation, Stead State: $\leq 5\%$

Frequency Waving: $\leq 1.5\%$

Sudden Frequency Warp: $\leq +12\%$

Transient frequency deviation: $\leq -10\%$

Frequency Recovery Time: $\leq 5\text{S}$

Standard Features

◆ Standard Auto Control System

◆ Starting batteries

◆ Exhaust System

◆ MCCB

◆ Battery switch

◆ Shock pad

◆ Special tool

◆ Oil Drain Valve

◆ Documents

Options

Engine: Engine Heater

Battery Charger

Air preheater

Alternator: Alternator Heater

PMG

Electrical System: Remote Control Panel

Automatic Transfer Switch

Paralleling System

Type: Rainproof Type

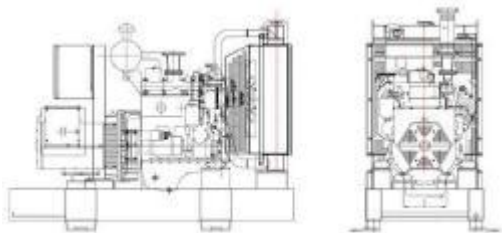
Soundproof Type

Trailer Type

Other: Spare Parts

Daily Fuel Tank

Dimension & Weight



Open Type

Overall Size: 3500(mm) × 1105 (mm) × 1960 (mm)

Weight: 3385 kg

Soundproof Type

Overall Size: 4000 (mm) × 1800 (mm) × 2150 (mm)

Weight: 5185kg

Standard Control Panel



Huaquan Power uses micro processing technique integrating digital, intelligent and network techniques which can carry out functions including auto start/stop, data measure, alarming. The controller uses Smartgen LCD display, optional Chinese and English/ Russian/ Spanish display interface with operation easy and reliable. It can be widely used in all types of generator automatic control system for compact structure, advanced circuits, simple connections and high reliability.

Typical Projects

