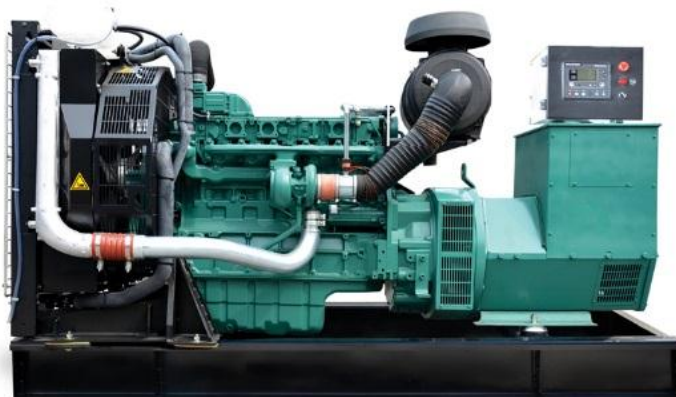


MODEL	HQV160GF	
Prime Power(50Hz)	160KW	200KVA
Standby Power(50Hz)	176KW	220KVA

**Standard Features**

General Features:

- ◆ Engine (Volvo TAD733GE)
- ◆ Radiator 40°C max, fans are driven by belt, with safety guard
- ◆ 24V charge alternator
- ◆ Alternator: single bearing alternator IP23, insulation class H/H
- ◆ Absorber
- ◆ Dry type air filter, fuel filter, oil filter
- ◆ Main line circuit breaker
- ◆ Standard control panel
- ◆ Batteries, rack and cable
- ◆ Ripple flex exhaust pipe, exhaust siphon, flange, muffler
- ◆ User manual



**Generator Ratings**

Voltage(V)		Hz	Phase	P.F (cos φ)	Prime Amps (A)	Prime Ratings (KW/KVA)	
440	254	50	3	0.8	262.44	160	200
415	240	50	3	0.8	278.25	160	200
400	230	50	3	0.8	288.68	160	200
380	220	50	3	0.8	303.88	160	200

●Prime Power (PRP): Prime power is available for an unlimited number of annual hours in variable load application, in accordance with GB/T2820-97 (eqv ISO8528) ; A 10% overload capability is available for a period of 1 hour within a 12-hour period of operation.

●Standby Power Rating (ESP): The standby power rating is applicable for supplying emergency power for the duration of a utility power interruption. No overload, utility parallel or negotiated outage operation capability is available at this rating.

**Standard Features**

Huaquan Power provides a full line of brand new and high quality products. Each and every unit is strictly factory tested. Warranty is according to our standard conditions: ①12 months, counted on the day Huaquan sold to the first buyer; ② One year after installation; ③ 1000 running hours (accumulated); subject to the earlier one. Service and parts are available from Huaquan Power or distributors in your location.



## Volvo Genset

HQV160GF

### Engine Data

Manufacturer / Model: Volvo TAD733GE , 4-stroke  
Air Intake System: Turbo charger  
Fuel System: Direct injection, Rotary low-pressure fuel pump  
Cylinder Arrangement: 6 in line  
Lubrication system: Rotary displacement oil pump driven by the crankshaft  
Displacement: 7.15L  
Bore and Stroke: 108\*130 (mm)  
Compression Ratio: 18.1:1  
Rated RPM: 1500rpm  
Max. Standby Power: 197KW  
Governor Type: 24 V electrical system, ECU control

### Exhaust system

Max Back Pressure: 5kPa  
Exhaust gas flow: 31.8 m<sup>3</sup>/min

### Air Intake System

Max Intake Restriction: 2.5kPa

### Fuel System

25% (Prime Power) Load: 228g/Kw.h  
50% (Prime Power) Load: 217g/Kw.h  
75% (Prime Power) Load: 214g/Kw.h  
100% (Prime Power) Load: 216g/Kw.h

### Oil System

Total Oil Capacity: 34L  
Oil Consumption: ≤0.09L/h

### Cooling System

Total Coolant Capacity: 40L  
Fan power consumption: 4.4KW

### Alternator Specification

Compliance with GB755, BS5000, VDE0530, NEMAMG1-22, IED34-1, CSA22.2 and AS1359 standards.

### Alternator Data

Manufacturer: STAMFORD/MARATHON/ LEROY-SOMER/HUAQUAN

Number of Phase: 3

Connecting Type: 3 phase and 4 wires,"Y" type connecting

Number of bearing: 1

Power factor: 0.8

Protection grade: IP23 option,upon request

Altitude :  $\leq 1000\text{m}$

Exciter type: Brushless,self-exciting

Insulation class: H

Telephone influence factor(TIF):  $\leq 50$

THF:  $\leq 2\%$

Alternator Capacity: 200KVA

Alternator Efficiencies: 85%

Air Cooling Flow:  $0.09\text{m}^3/\text{s}$

### Generating Set Data

Voltage Regulation:  $\geq \pm 5\%$

Voltage Regulation, Stead State:  $\leq \pm 1\%$

Sudden Voltage Warp:  $\leq +25\%$

Sudden Voltage Warp:  $\leq -20\%$

Voltage Stable Time:  $\leq 5\text{S}$

Voltage unbalance:  $\leq 1\%$

Frequency Regulation, Stead State:  $\leq 5\%$

Frequency Waving:  $\leq 0.5\%$

Sudden Frequency Warp:  $\leq +10\%$

Transient frequency deviation:  $\leq -7\%$

Frequency Recovery Time:  $\leq 3\text{S}$

### Standard Features

◆ Standard Auto Control System

◆ Starting batteries

◆ Exhaust System

◆ MCCB

◆ Battery switch

◆ Shock pad

◆ Special tool

◆ Oil Drain Valve

◆ Documents

### Options

Engine: ◇ Engine Heater

Alternator: ◇ Alternator Heater

Electrical System: ◇ Remote Control Panel

Type: ◇ Rainproof Type

Other: ◇ Spare Parts

◇ Battery Charger

◇ PMG

◇ Automatic Transfer Switch

◇ Soundproof Type

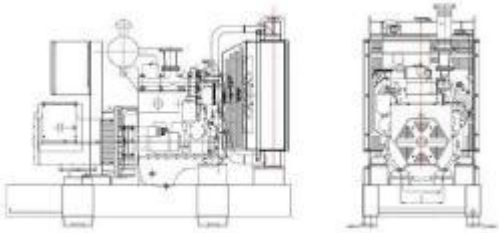
◇ Daily Fuel Tank

◇ Air preheater

◇ Paralleling System

◇ Trailer Type

**Dimension & Weight**



**Open Type**

Overall Size: 2400(mm)× 890 (mm) ×1380 (mm)

Weight: 1950kg

**Soundproof Type**

Overall Size: 3100 (mm) ×1100 (mm) ×1770 (mm)

Weight: 2550kg

**Standard Control Panel**



Huaqian Power uses micro processing technique integrating digital, intelligent and network techniques which can carry out functions including auto start/stop, data measure, alarming. The controller uses Smartgen LCD display, optional Chinese and English/ Russian/ Spanish display interface with operation easy and reliable. It can be widely used in all types of generator automatic control system for compact structure, advanced circuits, simple connections and high reliability.

**Typical Projects**

