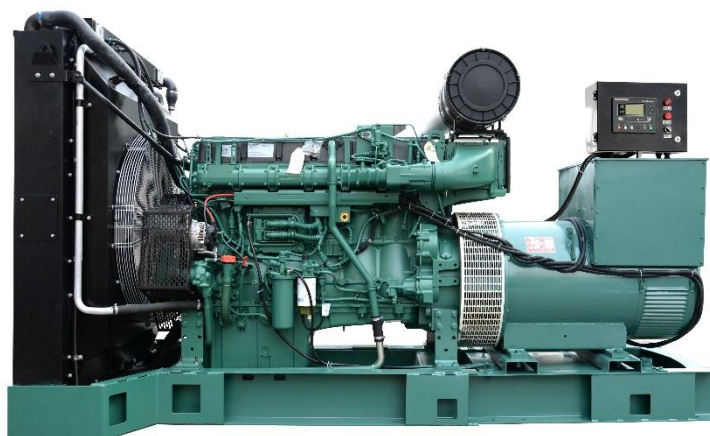


MODEL	HQV500GF	
Prime Power(50Hz)	500KW	625KVA
Standby Power(50Hz)	550KW	687.5KVA

**Standard Features**
**General Features:**

- ◆ Engine (Volvo TWD1643GE)
- ◆ Radiator 40°C max, fans are driven by belt, with safety guard
- ◆ 24V charge alternator
- ◆ Alternator: single bearing alternator IP23, insulation class H/H
- ◆ Absorber
- ◆ Dry type air filter, fuel filter, oil filter
- ◆ Main line circuit breaker
- ◆ Standard control panel
- ◆ Batteries, rack and cable
- ◆ Ripple flex exhaust pipe, exhaust siphon, flange, muffler
- ◆ User manual


**Generator Ratings**

Voltage(V)		Hz	Phase	P.F (cos $\phi$ )	Prime Amps (A)	Prime Ratings (KW/KVA)	
440	254	50	3	0.8	820.12	500	625
415	240	50	3	0.8	869.53	500	625
400	230	50	3	0.8	902.14	500	625
380	220	50	3	0.8	949.62	500	625

●Prime Power (PRP): Prime power is available for an unlimited number of annual hours in variable load application, in accordance with GB/T2820-97 (eqv ISO8528) ; A 10% overload capability is available for a period of 1 hour within a 12-hour period of operation.

●Standby Power Rating (ESP): The standby power rating is applicable for supplying emergency power for the duration of a utility power interruption. No overload, utility parallel or negotiated outage operation capability is available at this rating.

**Standard Features**

Huaquan Power provides a full line of brand new and high quality products. Each and every unit is strictly factory tested. Warranty is according to our standard conditions: ①12 months, counted on the day Huaquan sold to the first buyer; ② One year after installation; ③ 1000 running hours (accumulated); subject to the earlier one. Service and parts are available from Huaquan Power or distributors in your location.



## Volvo Genset

HQV500GF

### Engine Data

Manufacturer / Model: Volvo TWD1643GE, 4-stroke .

Air Intake System: Waste gate system for the high pressure turbo charger

Fuel System: Electronic unit injectors, Gear driven low-pressure fuel pump

Cylinder Arrangement: 6 in line

Lubrication system: Gear type lubricating oil pump, gear driven by the transmission

Displacement: 16.12L

Bore and Stroke: 144\*165 (mm)

Compression Ratio: 16.5:1

Rated RPM: 1500rpm

Max. Standby Power: 596KW

Governor Type: Electronic governing, EMS2, CAN bus signals, CIU, Control Interface Unit

### Exhaust system

Max Back Pressure: 10kPa

Exhaust gas flow: 101.6 m<sup>3</sup>/min

### Air Intake System

Max Intake Restriction: 5kPa

### Fuel System

25% (Prime Power) Load: 215g/Kw.h

50% (Prime Power) Load: 196g/Kw.h

75% (Prime Power) Load: 196g/Kw.h

100% (Prime Power) Load: 199g/Kw.h

### Oil System

Total Oil Capacity: 48L

Oil Consumption: ≤0.1L/h

### Cooling System

Total Coolant Capacity: 80L

### Alternator Specification

Compliance with GB755, BS5000, VDE0530, NEMAMG1-22, IED34-1, CSA22.2 and AS1359 standards.

### Alternator Data



## Volvo Genset

HQV500GF

Manufacturer: STAMFORD/MARATHON/ LEROY-SOMER/HUAQUAN

Number of Phase: 3

Connecting Type: 3 phase and 4 wires,"Y" type connecting

Number of bearing: 1

Power factor: 0.8

Protection grade: IP23 option,upon request

Altitude :  $\leq 1000\text{m}$

Exciter type: Brushless,self-exciting

Insulation class: H

Telephone influence factor(TIF):  $\leq 50$

THF:  $\leq 2\%$

Alternator Capacity: 625KVA

Alternator Efficiencies: 85%

Air Cooling Flow: 0.09m<sup>3</sup>/s

### Generating Set Data

Voltage Regulation:  $\geq \pm 5\%$

Voltage Regulation, Stead State:  $\leq \pm 1\%$

Sudden Voltage Warp:  $\leq +25\%$

Sudden Voltage Warp:  $\leq -20\%$

Voltage Stable Time:  $\leq 5\text{S}$

Voltage unbalance:  $\leq 1\%$

Frequency Regulation, Stead State:  $\leq 5\%$

Frequency Waving:  $\leq 0.5\%$

Sudden Frequency Warp:  $\leq +10\%$

Transient frequency deviation:  $\leq -7\%$

Frequency Recovery Time:  $\leq 3\text{S}$

### Standard Features

◆ Standard Auto Control System

◆ Starting batteries

◆ Exhaust System

◆ MCCB

◆ Battery switch

◆ Shock pad

◆ Special tool

◆ Oil Drain Valve

◆ Documents

### Options

Engine:  Engine Heater

Battery Charger

Air preheater

Alternator:  Alternator Heater

PMG

Electrical System:  Remote Control Panel

Automatic Transfer Switch

Paralleling System

Type:  Rainproof Type

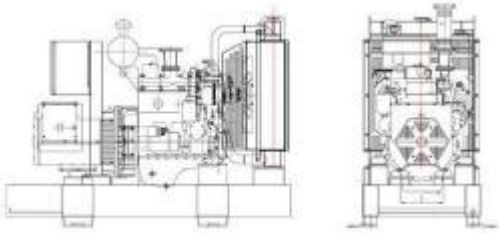
Soundproof Type

Trailer Type

Other:  Spare Parts

Daily Fuel Tank

## Dimension & Weight



### Open Type

Overall Size: 3900(mm) × 1500 (mm) × 2100 (mm)

Weight: 4200kg

### Soundproof Type

Overall Size: 4900 (mm) × 2250 (mm) × 2600 (mm)

Weight: 7000kg

## Standard Control Panel



Huaqian Power uses micro processing technique integrating digital, intelligent and network techniques which can carry out functions including auto start/stop, data measure, alarming. The controller uses Smartgen LCD display, optional Chinese and English/ Russian/ Spanish display interface with operation easy and reliable. It can be widely used in all types of generator automatic control system for compact structure, advanced circuits, simple connections and high reliability.

## Typical Projects

